

## Initiatives

### The Programs Made Possible with Your Donations

Your support has helped fund many much-needed initiatives in the world of Lyme disease. **Turn the Corner Foundation** (TTC) is so pleased to convert your donations into programs that make a difference in peoples' lives.

#### Under Our Skin

TTC is the official Outreach Partner for the documentary *Under Our Skin*. The film investigates the shocking human, medical, and political dimensions of Lyme disease. We are extremely excited and proud to announce its theatrical release across the country! Please join TTC in celebrating the film's achievement by spreading the word to family and friends and coming to a showing.

This prestigious film has already earned many awards, including Best in Infectious Diseases at the **International Health and Medical Media Awards**. The film's theatrical release is a huge accomplishment and testament to the importance of the film, Lyme disease, and everything we fight for. **Visit [www.underourskin.com](http://www.underourskin.com) to access a list of screenings in the U.S.**

#### Physicians Training Program

This groundbreaking program provides medical practitioners the opportunity to study with a Lyme-literate health care professional to recognize and treat Lyme disease successfully. During a two-week mentoring period, trainees can learn first-hand from the Lyme-literate doctor through watching them in action with patients and learning their individual approaches to diagnosis and treatment. These professionals bring this skill set back to their community in order to better care for their patients. Over 100 doctors have already been trained through this program, helping thousands of people with Lyme disease. **Your donation helps doctors from all over the world become Lyme-literate.**

*Dr. Ann Corson participated in the Physicians Training Program for a total of three weeks, working with Dr. Joseph Burrascano and Dr. Charles Ray Jones in 2003 and 2004. She has become an essential Lyme-literate doctor and we are presenting her with the Impact Award at our upcoming gala.*

"I entered the Program because I sought to learn more about the disease that was killing my only child. After starting my own practice taking care of tick borne disease (TBD) patients, I wanted to learn from the founding fathers of Lyme disease about the clinical evaluation and management of TBDs.

Everything I learned in those three weeks was important. Every tidbit of clinical knowledge has been invaluable to me on a daily basis. A huge amount of the global scientific knowledge supporting ILADS' viewpoint continues to amass at an extraordinary rate weekly. I use the knowledge acquired from my participation in TTC's PTP daily in the treatment of my TBD patients.

I have practiced primary care medicine in Emergency Medicine, Occupational Medicine and Family Medicine for over 27 years. After receiving a BA in Biology from Franklin and Marshall College, I was a PhD candidate in the Department of Anatomy at the Milton S. Hershey School of Medicine of the Penn State University. In 1982 I received my MD degree from the University of Pennsylvania School of Medicine and have been Board Certified in Family Medicine since 1990."

*Doctors from around the world have participated in the Physicians Training Program and gained invaluable knowledge about diagnosis and treatment of Lyme disease. Help fund their education by making a donation today.*

## Grants

### Cutting-Edge Research Programs Only Possible with Your Support

**"I want to thank TTC's donors for financing my studies of biofilms and nematodes. Both studies have very significant potential to improve the treatment of chronic Lyme disease."**

—Eva Sapi, TTC Grant Recipient

These innovative research projects will have a monumental impact in regard to the treatment and diagnosis of Lyme disease. Your donation helps scientists and doctors study various approaches that can one day "Turn the Corner" on Lyme disease.

#### M. Karen Newell, Ph.D. Colorado Springs, CO

This ground-breaking research project being conducted at the University of Colorado at Colorado Springs has implications for improving quality of life for Lyme patients in the future. This study examines the genetics of chronic inflammation, which is a characteristic of every stage of Lyme disease. Using targeted peptides aimed at those that have the particular "immune response" genes associated with disease, Dr. Newell will attempt to reduce the inflammation caused by the *Borrelia* bacteria.

#### Eva Sapi, Ph.D. West Haven, CT

Dr. Sapi, entering the second year of her two-year grants, has been studying the role of biofilms and nematodes in *Borrelia burgdorferi*, the bacterial agent of Lyme disease. Dr. Sapi has confirmed that the *Borrelia* bacteria is capable of hiding within a complex covering called biofilm, which increases its resistance to antibiotic treatment. The next step is to test which agents will ensure that *Borrelia* cannot hide in biofilm during and after antibiotic therapy. Dr. Sapi strongly believes this research will be vital to treating patients with chronic Lyme disease.

A second study focuses on filarial nematodes, a microscopic worm found in deer ticks, the type that are known to spread Lyme disease. The researchers have identified that at least 40% of the tested deer ticks had this pathogen. The goal of this study is to provide a new means to test Lyme patients for a novel infection and to develop different therapeutic protocols, especially for those patients who are not responding to antibiotics.

#### Lyme Literacy Programs for Patients Washington, DC

TTC sponsored several projects to increase awareness of Lyme, including a legislative forum in the nation's capital, led by the **National Capital Lyme and Tick-Borne Disease Association**. The forum helped build unity in the Lyme community and to educate many people about the legislative process and what they could do to help chronic Lyme to be recognized by the **United States Congress**.

*Please consider becoming a sponsor of a research program. For more information, please fill out the attached form or contact Darren Port at 646.278.6735 or [darren@poweredbyprofessionals.com](mailto:darren@poweredbyprofessionals.com).*

## Gala Spotlight

**"Since 2002, Turn the Corner's donors have given over \$4 million in support of Lyme disease research and education. We are pleased that this money has been used to train doctors, educate the public and support innovative research aimed at finding a cure. We thank all our individual and corporate donors for their generosity."**

—Charles Balducci, Vice President of Turn the Corner Foundation

TTC would like to thank everyone who attended and supported our third annual fundraising gala, *Unmask A Cure*, held on November 13, 2008 at **Gotham Hall** in New York City! Guests enjoyed a great night of cocktails, a dinner reception, silent and live auctions and a sweepstakes!

On this special evening, the Foundation honored **Bernard D. Raxlen, MD**, a Lyme-literate physician, and **Andy Abraham Wilson**, Producer/Director of *Under Our Skin*. Event chairpersons were **Karen Kissling, Kris Newby, Steven C. Rodger, Leo J. Shea III, Ph.D.** and **Alyssa Sokoloff**. **Courage Awards** were presented to **Alicia Brawn; Cydney Chase; Kathy Fowler; Michele Matthews; Jordan Fisher Smith; Sheila Statlander, Ph.D.**; and **Lindsay Zweibel**. Award-winning comedy writer Alan Zweibel was a special guest at the gala and live music was provided by the **Subscribers**.

Cuisine was provided by **Barna, Cook With Class, España, Gabriela's, 21 Prince, Planet Thailand 212, STK, Thalassa, Appetizerstogo.com** and **Victor's Café**. Spirits were provided by **Ketel One, Lucid** and **Voyant Chai**.

Thank you again to everyone who attended and supported *Unmask A Cure!* Special thanks go to our wonderful sponsors and volunteers who made this evening possible.



From Left: Kris Newby (Senior Producer), Andy Abrahams Wilson (Producer/Director), and Jordan Fisher Smith (Film Subject) pose at TTC's premier screening of *Under Our Skin*.

Please join us at the Fourth Annual Fundraising Gala, **Unmask A Cure**, to be held on Thursday, November 5, 2009 from 6:00 PM to 10:00 PM at the **Edison Ballroom in New York City!** We will be honoring **Dr. Daniel Cameron** with the **Humanitarian Award**, and **Dr. Ann Corson** with the **Physicians Training Program Impact Award**.

*If you are interested in sponsoring this event, would like to donate an item for the auction or silent auction, or would like to serve on the Event Committee, please contact Darren Port at 646.278.6735 or [darren@poweredbyprofessionals.com](mailto:darren@poweredbyprofessionals.com)*

## Create Footprints™

### Plan or Join a Walk in Your Community to Raise Funds in the Fight Against Lyme Disease

Turn the Corner has partnered with **Create Footprints™**, a national program that allows volunteers across the country to plan a walk to raise funds for Lyme disease research and initiatives through TTC. You can become an organizer of an event and raise money in your own neighborhood. Create Footprints™ gives you everything you need, including forms and step-by-step instructions, to execute a successful fundraising walk no matter where you live. The staff at Create Footprints™ and Powered by Professionals will be there to support your efforts every step of the way. **Visit [www.turnthecorner.org/createfootprints](http://www.turnthecorner.org/createfootprints) to join an existing walk or sign up to plan one in your community.**



Participants enjoy a beautiful day at the First Annual Create Footprints Walk in Libertyville, IL, organized by **Kimberly Heeres-Frank** and her amazing committee.

#### Upcoming walks include:

Mountain View, CA – 11.7.09  
Westport, CT – 4.11.10  
Washington, DC – Spring, '10\*  
Chester County, PA – Spring, '10\*  
Warwick, RI – Spring, '10\*  
White Plains, NY – Fall, '10\*  
Libertyville, IL – Fall, '10\*  
Groton, MA – Fall, '10\*

\*Specific dates to be determined.

Don't see your community here? Get in on the fun (and fundraising) and organize your own walk.

Visit [www.turnthecorner.org/createfootprints](http://www.turnthecorner.org/createfootprints) or email [ken@createfootprints.org](mailto:ken@createfootprints.org) to learn more.

## Make A Difference Today

**"One who gives and encourages others to give – he is the most highly praised..."**

—Pirkei Avot

You, the volunteers and donors, are instrumental to our success. You have the power to change the lives of people with Lyme disease by getting involved or making a donation. We would be happy to have you as a member of our growing team!

I have Lyme disease \_\_\_\_ Yes \_\_\_\_ No

I would like to make a donation of \$ \_\_\_\_.  
\_\_\_\_ I have enclosed a **check** made out to Turn the Corner Foundation.  
\_\_\_\_ I have listed my **credit card** information below.

\_\_\_\_ My company has a **matching gifts** program.

I want to get involved with TTC. Please send me more information about:  
\_\_\_\_ Opportunities to **Sponsor a Program**.  
\_\_\_\_ Serving on the **Board of Directors**.  
\_\_\_\_ Serving on the **Event Committee**.  
\_\_\_\_ Participating in **Create Footprints™**.

\_\_\_\_ Please send this newsletter to friends of mine, whose contact information is:  
Name: \_\_\_\_\_  
Address: \_\_\_\_\_  
City: \_\_\_\_\_ State: \_\_\_\_\_ Zip: \_\_\_\_\_  
Email: \_\_\_\_\_

#### Your Contact and Payment Information


Name: \_\_\_\_\_  
Address: \_\_\_\_\_  
City: \_\_\_\_\_ State: \_\_\_\_\_ Zip: \_\_\_\_\_  
Email: \_\_\_\_\_  
Phone #: \_\_\_\_\_

Credit Card Name:  AmEx  Visa  MasterCard Expiration: \_\_\_\_/\_\_\_\_

Credit Card Number: \_\_\_\_\_

Security Code (3- or 4-digit number on back of card): \_\_\_\_\_

Signature: \_\_\_\_\_

**Please enclose this form in an envelope and send to:**  
 Turn the Corner Foundation  
c/o Powered by Professionals  
1375 Broadway, 3rd Floor  
New York, NY 10018

**You can also make a donation online at:**  
[www.turnthecorner.org](http://www.turnthecorner.org)

Turn the Corner Foundation is a not-for-profit charity recognized by the IRS under 501 (c) (3)  
TTC's EIN/Tax ID is 03-0392311



## Special Thanks

You, the volunteers and donors, are the backbone of our foundation. The time, products and funds you donate help TTC work towards achieving its mission. TTC would like to specially thank the volunteers below for their service. We would not be able to create change in the Lyme disease community without you.

### Executive Board

Staci Grodin <i>President</i>	Charles P. Balducci <i>Vice President</i>	Stephanie W. Spar <i>Vice President of Program Development</i>
Richard Grodin <i>Treasurer</i>	Alyssa Sokoloff <i>Secretary</i>	

### Board of Directors

Anthony Addison	Matt Jacobs	Lorrie Nadel
Michael P. Beach	Nan Kurzman	Edward G. O'Connell
Lisa Gitnik Maloul	Danny Lirtzman	Daniel Pine
Faythe Goldman		Stephen Soleymani

### Advisory Board

Kenny Dichter	Damon Giglio	Eric S. Kratz	Leo Shea III, Ph.D.
Nancy Fitzsimmons	Jesse Itzler	Brooke Landau	Gary Sommers

### Medical Advisory Board

Gregory Paul Bach, DO, FAAIM	Richard Horowitz, MD
Sabra M. Bellowin, MD	Joseph G. Jemsek, MD, FACP
Kenneth A. Bock, MD	Charles Ray Jones, MD
Stephen J. Bock, MD	Alan B. MacDonald, MD
Joseph J. Burrascano JR., MD	Jeffrey A. Morrison, MD, C.N.S.
Robert C. Bransfield, MD, FAPA	Stephen E. Phillips, MD
Daniel Cameron, MD, MPH	Bernard D. Raxlen, MD
Ingeborg S. Dziedzic, MD	Virginia T. Sherr, MD
Andrea Gaito, MD	Gerald T. Simons, PA-C
Nick S. Harris, Ph.D., ABMCI	Harold A. Smith, MD

### 2008 Event Committee

Virginia Anez	Faythe Goldman	Barbara Perry
Cathy Balsamo	Verne & Herbert Grodin	Sharon Richter, MS, RD, CDN
Lauren Borish	Mara Heppen	Chad Rose
Janet Brand	Merrilee Hesterfer-Diaz	Melissa Roth
Cameron Buzzeo	Allie Hill	Kathy Rucker
Ali & Michael Cammeyer	Nicole Kalish	Barbara Shelton
Dolores Claesson	Katherine Kane	Alexandra Spar
Cesar Diaz	Alisdair Lee	Jacqueline Spar
Sari and Steve Feinberg	Heather Levine	Lora Tell
Laura Field	Myriam Munoz	Alexis Weber
Alexander Field	Daniel Paris	
Marvin & Carole Gitnik	Jeanne Payne	

### 2008 Sponsors

Damon Giglio Foundation	The Spar Family	Starker Family Foundation
Newmark Knight Frank	Marion & Carl Wolf	Karen Kissling/YogaKids
Open Eye Pictures	Patrick & Christine Beach	New York Private Bank & Trust
Citi Smith Barney	Marquis Jet	New York Tick Control
Goldman Sachs	Francis R. May	Quadrum Capital
David & Cindy Reichenbaum	Miller Tabak	

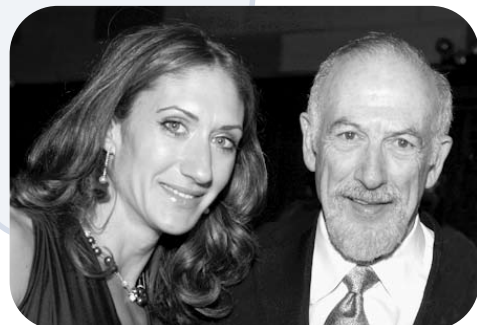
If you are interested in becoming a part of TTC, please fill out the attached form or contact Darren Port at 646.278.6735 or darren@poweredbyprofessionals.com.

## Message from the Founder

Dear Friends and Family:

We are so excited about the progress that **Turn the Corner Foundation** (TTC) continues to make because of your help. Every day, we work towards our mission to support research, education, awareness and innovative treatments for Lyme disease and other tick-borne diseases.

We are proud of our support of the documentary *Under Our Skin*, which continues to spread awareness of the illness throughout the country. Find the film in your area at [www.underourskin.com](http://www.underourskin.com).



TTC co-founder Staci Grodin with 2008 honoree Dr. Bernard Raxlen.

TTC wants to remind everybody to do frequent tick checks and look out for symptoms of Lyme disease that can include headaches, fever, arthritis, Bell's palsy, dizziness, confusion and many others. If you or somebody you know has been bitten by a tick and is displaying any of these signs or a bull's eye rash, please see a Lyme-literate doctor and get tested for Lyme disease and other tick-borne diseases as soon as possible. Early treatment is ideal. You can find a Lyme-literate doctor by emailing [info@turnthecorner.org](mailto:info@turnthecorner.org) with your location and contact information.

With your generous donations, we have funded research studies, physician training and patient-advocacy forums. Please read through this newsletter to see what steps we are taking to increase awareness and fund innovative grants. Fill out the tear-off panel to get involved today.

Thank you for your continued support.

Sincerely,  
Staci Grodin  
TTC Co-Founder

*This summer I had the unique opportunity to work with Dr. Karen Newell at the University of Colorado in The Institute of Bioenergetics and Immunology. With grant money from TTC's donors, Dr. Newell has been busy unlocking the mysteries of Auto-Immune Disorders. TTC thanks Dr. Newell and her dedicated staff for creativity and intelligence in pursuing cellular clues that combat disease.*

—Nan Kurzman, TTC board member

[info@turnthecorner.org](mailto:info@turnthecorner.org)

## A Face Behind the Foundation

### Board Member Lorrie Nadel Discusses Her Involvement with Turn the Corner Foundation



"You saved my life." These are the most rewarding words I hear. I volunteer for Turn the Corner Foundation by answering emails that come to [info@turnthecorner.org](mailto:info@turnthecorner.org). I refer people to Lyme-literate doctors and other resources to help them through their fight with Lyme.

I have fought Lyme disease for eight years and have gone through misdiagnosis, improper treatment, emotional struggles and worry that my symptoms were all in my head. I was constantly seeing doctors (I think I saw 50 in total) for six years. I even stayed at the Mayo Clinic for a week, and nobody could figure out my what was causing my symptoms. It was only by co-

incidence that I found out what was wrong with me. An acquaintance of my husband's knew about Lyme from personal experience and helped me tremendously. Once I knew that the symptoms I was experiencing had a name, I had hope, for the first time, that I could recover. Further, once I found a Lyme-literate doctor (LLMD) and started a treatment plan that worked for me, I wanted to help others who were experiencing similar struggles with Lyme disease.

I found Turn the Corner when I was doing research about treatments for my chronic Lyme and knew at once that it was a perfect fit for me. I love answering the emails that come in because I feel like I have a lot of information to share. It is quite fulfilling to help others, and I hope they have an easier time than I did obtaining a diagnosis and receiving treatment.

I have worked to make TTC's doctor referral service efficient and I provide everybody who contacts us with as much up-to-date information as possible regarding Lyme. Since we are not doctors, our most important goal is to get Lyme patients in the offices of LLMDs. An LLMD can diagnose Lyme and other tick-borne illnesses and put a person on an individualized treatment plan to help relieve their particular symptoms. I urge everybody who thinks they may have Lyme to email [info@turnthecorner.org](mailto:info@turnthecorner.org) and see an LLMD.

I hope to continue answering the emails, as well as help Turn the Corner with any other projects that help others suffering with Lyme. It has been a very positive experience for me and helped my mental attitude. On a personal note, I am a stay-at-home mom with two children, ages 10 and 13. I graduated from Indiana University with a B.A. in telecommunications. I enjoy spending time with my family and friends as well as keeping up to date with the most recent Lyme disease-related materials.

[info@turnthecorner.org](mailto:info@turnthecorner.org)

c/o Powered by Professionals  
1375 Broadway, 3rd Floor  
New York, NY 10018



Please join us at the Fourth Annual Fundraising Gala, **Unmask A Cure**, to be held on Thursday, November 5, 2009 from 6:00 PM to 10:00 PM at the Edison Ballroom in New York City! Buy tickets now at [www.turnthecorner.org](http://www.turnthecorner.org).

POWERED BY  
PROFESSIONALS  
Your Charity Connection



## Annual Newsletter Fall 2009

[www.turnthecorner.org](http://www.turnthecorner.org)